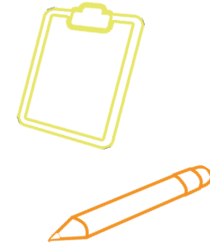


**ENGAGE**  
with discipline

**Proactive Engagement**

**Ongoing Communication**

**UT LIBRARIES**  
Collections  
Spaces  
Services & more!



**LIAISON SERVICES**  
Research Assistance  
Scholarly Communication  
Instruction, tutorials & more!

**ASSIGNED AREAS**

Building Relationships.  
Engaging with faculty, staff  
and students  
Discipline-specific trends  
Scholarly literature

**Ongoing Communication**

**Campus Partnerships**

**UT Libraries**  
Maintain awareness  
Respond to needs

**Liaison Services**  
Respond to needs

## Liaison Expectations

Liaisons are expected to pursue activities in each of the areas identified in the “How Liaisons Engage” section of the Liaison Profile Task Force report (Engagement and Outreach, Teaching and Learning, Research and Scholarly Communication, and Stewardship and Collections).

Liaisons will proactively develop ongoing relationships with faculty, staff, and students in order to understand and support their teaching, learning, and research needs.

Informed by identified needs and professional trends, liaisons will develop and share relevant expertise, build strategic partnerships, design instructional programs and learning materials, and engage in continuous communication and outreach.

Liaisons will communicate user needs and expectations to relevant units within the library, maintain awareness of the array of library services, and make and receive referrals.

Liaisons will actively participate in small groups (including subject groups) to identify and accomplish shared tasks. Liaisons will collaborate to create, evaluate, and promote collections that support research, scholarship, and teaching.

## Liaison Guiding Principles

Small groups are the primary organizational unit for liaison activity

Liaison relationships/engagement guide the development of their expertise, and inform their activities

The Liaison Program must be positioned to dynamically respond to emerging needs on campus

Liaison activities are intertwined with other units throughout the library

